



GHOSTWORKS GT40 Class

High-Speed | Modular | Cold-Weather | Optionally Crewed



The changing security environment requires assets that are smaller, more dispersed, lower signature, and optionally manned. GHOSTWORKS is leveraging its racing/commercial carbon fiber boat building expertise and military/security experience to bring to market this versatile, cutting-edge platform.

The GT40 is the fastest crewed offering in the GhostWorks family of high-speed, shallow draft vessels.

Ghostworks customizes the GT platform for use in a variety of security, policing, search & rescue, logistics, and research operations.

The GT40 uses the same hybrid planing hull technology proven in racing and commercial boats. This allows the combination of speed, stability, and shallow draft needed for effective operation, whether uncrewed or optionally manned.

The carbon fiber sandwich construction insulates against the cold and does not expand or contract, providing superior cold weather performance.

The GT40 can be customized to accommodate a variety of electronics and customer-furnished weapon systems. The cabin can be enclosed for cold weather operations to protect the crew (if manned) from extreme temperatures.

The GT40 is designed for landing on the beach or in a well deck of a larger mothership. The carbon fiber hull is nearly maintenance-free as it does not corrode, expand or warp, thereby allowing the paint to last longer. This is ideal for deployment in remote areas.

The monocoque design is minimally manned by a crew of one (1) or two (2) or can be upgraded to uncrewed. It affords flexibility to carry modular packages, allowing rapid-ready refit for missions to occur quickly and safely.

Built with advanced carbon manufacturing techniques, the GT40 often can be produced in six (6) to nine (9) months, depending on the options selected.

Specification	Standard	Options
Overall Length	12.83m / 42ft	12.83m / 42 ft
Overall Beam	4m / 13ft	4m / 13ft
Height	3.2m/ 10.5 ft	4m / 13 ft
Deck Area	45 m ²	45 m ²
Displacement	5454 Kgm	Per Upgrades
Fuel Cap.	1500 Liters	2275 Liters
Range	400 Miles @ 40 Knots	600 Miles @ 40 Knots
Max Speed	55 Knots	65+ Knots
Armor	None	Kevlar/Carbon/Glass



GHOSTWORKS

DEFENSE
COMMERCIAL
RECREATIONAL



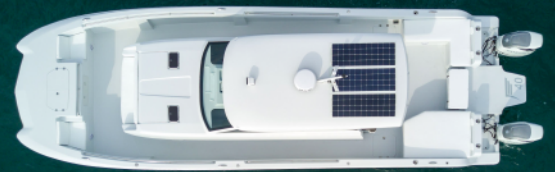
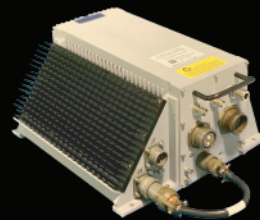
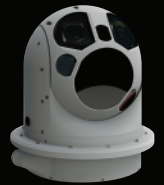
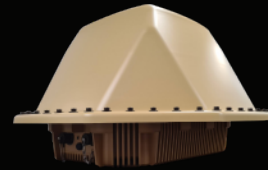
GHOSTWORKS GT40 MODULES

Security | Policing | Search & Rescue

Security And Defense

The GT40 bridges a growing gap in available small boat combatants. The GT40's low manning requirement and high-level systems integration fit into the complex warfare model required for 21st-century naval supremacy. The sport-boat styling of the GT40 hides the immense capabilities enabling the vessel to carry out its wide range of mission sets while blending seamlessly into local civilian traffic.

- ★ **ISR** - The GT40 can be fit out with a variety of EO/IR, SIGINT, ELANT, Sonobuoy receivers and radars to monitor targets of interest and collect information.
- ★ **Weapons Systems** - The GT40 can be customized to accommodate a variety of customer-furnished weapon systems, including non-lethal weapons, 50 caliber guns, and APKWS rockets.
- ★ **Rapid Response** - At 65+ Knots, the GT40 can respond to a crisis in a fraction of the time required by traditional marine forces.
- ★ **Uncrewed System Deployment** - The GT40's bow and stern hardpoints allow for fore and aft release and recapture of small payload specific USV and UUVs.
- ★ **Mine Clearance** - Advanced composite construction combined with exceptional maneuverability allows the GT40 to be an effective, safe and rapid response mine countermeasure vessel.



GHOSTWORKS

DEFENSE

COMMERCIAL

RECREATIONAL