



GHOSTWORKS M40 Class

High-Speed | Modular | Stable | Optionally Crewed



The changing security environment requires assets that are smaller, more dispersed, lower signature, and optionally manned. GHOSTWORKS is leveraging its racing/commercial carbon fiber boat building expertise and military/security experience to bring to market this versatile, cutting-edge platform.

The M40 is the mid-sized manned version of the M-Shaped Hull family of high-speed, shallow draft vessels. The single M-Hull design affords unprecedented efficiency, stability, modularity, cold weather capability, and payload flexibility for nearly any mission. The M-Hull provides up to a 40% reduction in impact and wave slap compared to a traditional V-hulled vessel of its size.

Ghostworks customizes the M40 platform for use in a variety of security, policing, search & rescue, logistics, and research operations.

The unique shape of the M-Hull allows the M40 to exceed the hull speed of conventional displacement craft. This allows the combined performance of speed, payload flexibility, and shallow draft needed for effective operation, whether uncrewed or optionally manned.

The carbon fiber sandwich construction insulates against the cold and does not expand or contract, providing superior cold-weather performance.

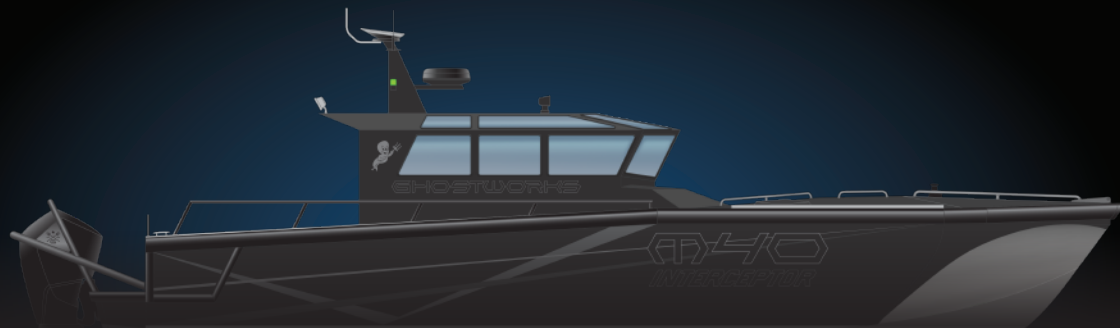
Options for inboard or outboard engine configurations provide flexibility for both commercial and security operations.

The M40 is designed for landing on the beach or in a well deck of a larger mothership. The carbon fiber hull is nearly maintenance-free as it does not corrode, expand, or warp, thereby allowing the paint to last longer.

The monocoque design is minimally manned by a crew of one (1) or two (2) or can be upgraded to uncrewed. It allows flexibility to carry modular packages and can be fit out for missions to occur quickly and safely.

Built with advanced carbon manufacturing techniques, the M40 often can be produced in six (6) to nine (9) months, depending on the options selected.

Specification	Standard	Options
Overall Length	12.8m / 42ft	12.8m / 42ft
Overall Beam	4.2m / 13.8 ft	4.2m / 13.8 ft
Height	3.5m/ 9.8 ft	5.5m /18 ft
Deck Area	53.8m ²	53.8m ²
Displacement	8 MT	Per Upgrades
Fuel Cap.	1150 Liters	1300 Liters
Range	300 Miles @ 30 Knots	225 Miles @ 40 Knots
Max Speed	45 Knots	55 Knots
Armor	None	Kevlar/Carbon/Glass



GHOSTWORKS

- DEFENSE
- COMMERCIAL
- RECREATIONAL



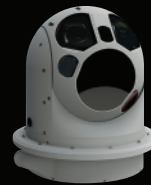
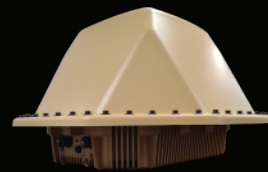
GHOSTWORKS M40 MODULES

Security | Policing | Search & Rescue

Security And Defense

The M40 bridges a growing gap in available small boat combatants. The M40's low manning requirement and high-level systems integration fit into the complex warfare model required for 21st-century naval supremacy. The workhorse of the Ghostworks M-hull family, the M-40 brings unprecedented speed and stability to the patrol boat market. Customizable cabin spaces and unrivaled ergonomics allow this platform to be configured to meet the most demanding requirements.

- ★ **ISR** - The M40 can be fit out with a variety of EO/IR, SIGINT, ELANT, Sonobuoy receivers and radars to monitor targets of interest and collect information.
- ★ **Weapons Systems** - The M40 can be customized to accommodate a variety of customer-furnished weapon systems, including Non-Lethal weapons, 50 caliber guns, and APKWS rockets.
- ★ **Rapid Response** - At 55+ Knots, the M40 can respond to a crisis in a fraction of the time required by traditional marine forces.
- ★ **Uncrewed System Deployment** - The M40's multiple hardpoints and configurable stern allow for 360 degree launch and recovery of small scale USV and UUVs.
- ★ **Mine Clearance / Diver Support** - Advanced composite construction and customizable side doors combine with the M40's UUV launch and control capabilities to create an effective and safe rapid response mine countermeasure and diver support vessel.



GHOSTWORKS

DEFENSE

COMMERCIAL

RECREATIONAL