



GHOSTWORKS M90 Class

High-Speed | Modular | Stable | Optionally Crewed



GHOSTWORKS is leveraging years of carbon fiber boat building excellence in the racing and commercial sectors and years of military and security experience to bring you this flexible, cutting-edge platform.

The M90 vessel is the next iteration of the M-Hull family of high-speed, shallow draft vessels. The signature M-Hull design affords unprecedented efficiency, stability, modularity, extreme weather ops capability, and payload flexibility for nearly any mission. The extended hull length and raised top deck vastly increase the structural integrity of the M90 platform, allowing for a wider variety of customizations and mission capabilities.

The M90's upgraded waterjet drive train increases maneuverability without compromising speed and allows for up to 400 hours of operation between routine maintenance.

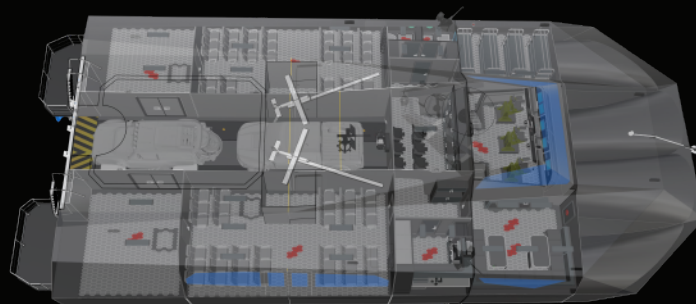
The Ghostworks subsystem agnostic philosophy allows the M90 to be customized for a variety of operational uses.

The unique shape of the M-Hull allows the M90 to exceed the hull speed of conventional displacement craft. The M-Hull creates nonmechanical dynamic lift, creating more stability as speed increases and drag decreases, increasing fuel efficiency and payload fracture. This allows the combination of speed, comfort, and shallow draft needed for effective littoral or extreme weather operations.

The carbon fiber sandwich construction insulates against extreme temperatures and does not expand or contract, providing superior all-weather performance.

The flexible payload capability allows the M90 to carry modular package containers. It can be customized to accommodate a variety of electronics and customer-furnished weapon systems, and the configuration allows for quick and safe rapid-ready refit mission changes.

The monocoque design is minimally manned by a crew of three (3) or five (5). The M90's multipurpose information center and multipurpose bays are rapidly configurable to control, launch, and maintain various uncrewed vessels.



The M90 can be configured for single-day operations or to house and support a crew of up to fifteen (15) sailors for operations lasting up to three (3) days without resupply.

The M90's Center Multi Purpose Reconfigurable Launch Bay is designed for launching and recovering up to 11M vessels or vehicles, allowing the M90 to act as a mothership. The carbon fiber hull is nearly maintenance-free as it does not corrode, expand, or warp, allowing the paint to last longer. This is ideal for deployment in remote areas.

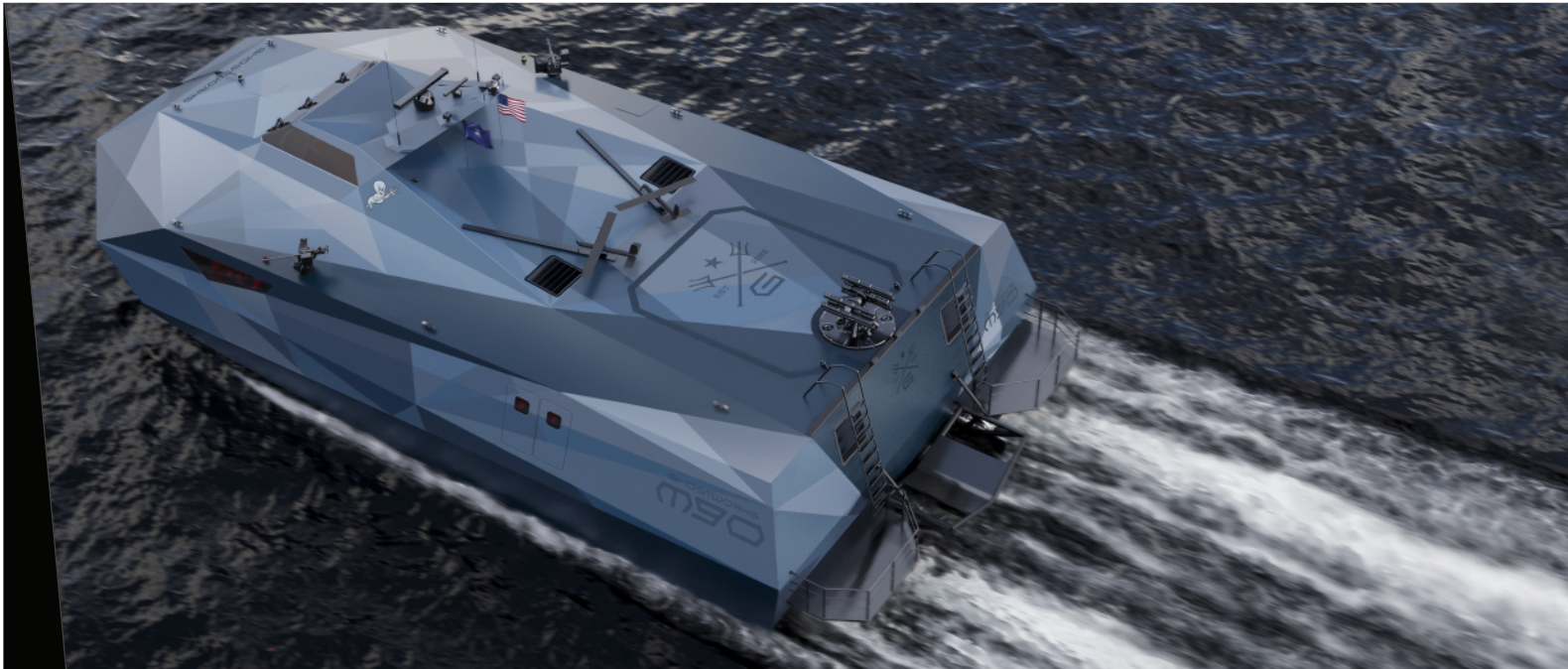
Built with pre-impregnated carbon on a multi-use mold, the M90 often can be delivered within twelve (12) months of contract award, pending options.

Specification	Standard	Options
Overall Length	28m / 92.2 ft	28m / 92.2 ft
Overall Beam	12.3m / 40.5 ft	12.3m / 40.5 ft
Draft	.9m / 3 ft	.9m / 3 ft
Payload	30 MT	35 MT
Displacement	85 MT	90 MT
Fuel Cap.	18,000 Liters	20,000 Liters
Range	700 Miles @ 35 Knots	900 Miles @ 40 Knots
Max Speed	50 Knots	55 Knots
Armor	None	Kevlar/Carbon/Glass



GHOSTWORKS

DEFENSE
COMMERCIAL
RECREATIONAL

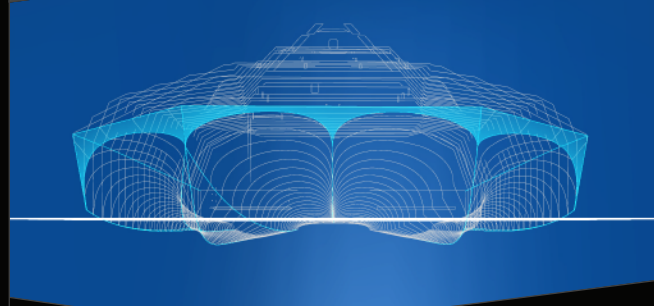


GHOSTWORKS M90 MODULES

Security and Defense

The M90 bridges the growing capability gap for rapid response littoral craft. The M90's low manning requirement and high-level systems integration allow it to accomplish various missions independently or as a key contributor to multi-domain forces.

- ★ **ISR** - The M90 can be fit out with a variety of EO/IR, SIGINT, ELANT, Sonobuoy receivers and radars to monitor targets of interest and collect information.
- ★ **SOF Insertion & Rapid Response** - A deployable RHIB and 50+ knot top speeds allows M90 to insert and extract small boat teams or respond to a crisis in a fraction of the time required by traditional maritime forces.
- ★ **UUV/USV/UAV Launch, Recovery, & Control** - The M90's multipurpose information center allows it to act as a mothership for uncrewed systems and serve as a C4ISR center.
- ★ **Weapons Systems** - The M90 can be customized to accommodate a variety of customer-furnished weapon systems, including 50 caliber guns, APKWS rockets, and anti-ship missiles.
- ★ **Mine Clearance** - Carbon fiber construction combined with UUV control allow the M90 to be an effective, safe, and rapid-response anti-mine vessel.
- ★ **Search and Rescue** - The M90's M-Hull allows for operations in sea state five, empowering it to reach distressed vessels that other platforms cannot.
- ★ **Modular Mission Systems** - The M90's open configuration allows for the rapid-ready refit of the vessel to accommodate a variety of missions. Open bays allow for mission-in-a-box readiness.



GHOSTWORKS

DEFENSE

COMMERCIAL

RECREATIONAL